

Virtual.PYXIS

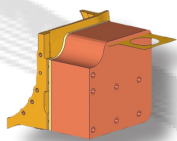
optimization

The topology optimization software you need

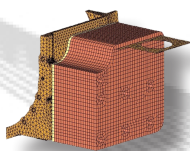
Success Case

Tractor cabin mount support

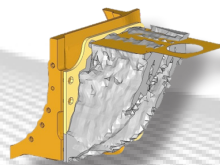
- ▶ *Validation according to ROPS requirements (Rollover Protective Structure)*
- ▶ *Complex nonlinear static analysis using plasticity material*
- ▶ *Analysis with hexa elements*
- ▶ *Control of maximum member size to drive the manufacturability to a sheet/welding process*
- ▶ *Objective: getting homogeneous reactions at all bolt locations during ROPS test*



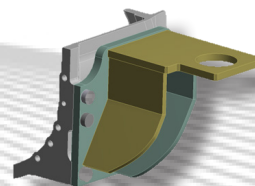
Extended Design



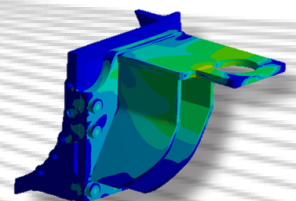
Mesh



Topology Optimization



CAD Interpretation



Validation

Courtesy:

